

■ SD-Water-proof Fluorescent



■ SD-Water-proof fluorescent



WPL-0111/0211

WATERPROOF: a range of general purpose water and dust resisting fluorescent luminaires injection moulded body, vandal resistant polycarbonate, high mechanical resistance.

Available fluorescent lamps for T8 2X36W/ G13.

Easy access to the lamps after releasing closing levers.

Ideal for factory, corridor, parking lot and commercial areas.

Please contact our sales office for further details.

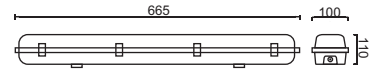
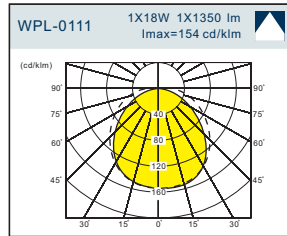




WPL-0111

Lamp: T8-1x18W G13
Reflector: Medium

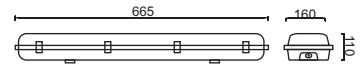
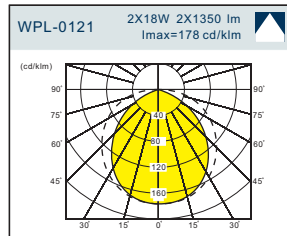
IP65



WPL-0121

Lamp: T8-2x18W G13
Reflector: Medium

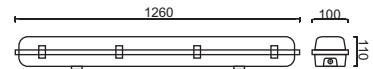
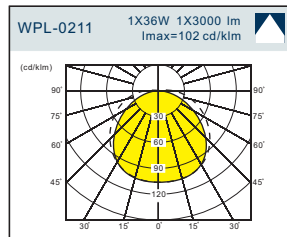
IP65



WPL-0211

Lamp: T8-1x36W G13
Reflector: Medium

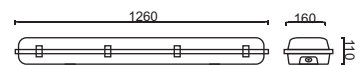
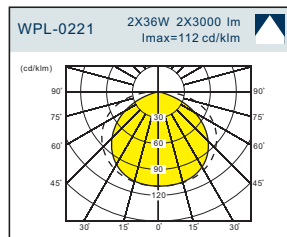
IP65



WPL-0221

Lamp: T8-2x36W G13
Reflector: Medium

IP65





WPL-0111/0211

WATERPROOF: a range of general purpose water and dust resisting fluorescent luminaires injection moulded body, vandal resistant polycarbonate, high mechanical resistance.

Available fluorescent lamps for Max. 2x54W. Easy access to the lamps after releasing closing levers.

Ideal for factory, corridor, parking lot and commercial areas.

Please contact our sales office for further details.



WPL-0311

Lamp: T8-1x18W G13
Dimension: 710x140x97(LxWxH)
IP65



WPL-0312

Lamp: T8-2x18W G13
Dimension: 710x210x97(LxWxH)
IP65



WPL-0321

Lamp: T8-1x36W G13
Dimension: 1310x140x97(LxWxH)
IP65



WPL-0322

Dimension: 1310x210x97(LxWxH)
Reflector: Medium
IP65



WPL-0331

Lamp: T8-1x54W G13
Dimension: 1610x140x97(LxWxH)
IP65



WPL-0332

Lamp: T8-2x54W G13
Dimension: 1610x210x97(LxWxH)
IP65

