



■ SD-Tunnel Lights



## Poplar-I

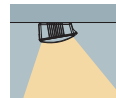
Tunnel lights for the illumination of road tunnel, underground channel, under the elevated, railway platform.

For fluorescent, metal halide lamps or high pressure sodium for Max.400W E40 lamp holders.

Die cast aluminium body coated with Plating.

Reflector made of highly pure aluminium sheet, polished and anodized.

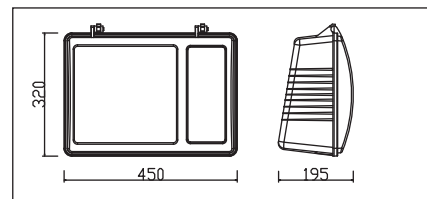
Please contact our sales office for further details.



### TL-0611

Lamp: MH/HPS 250W E40

Reflector: Symmetry Width





## Poplar-II

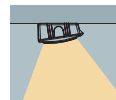
Tunnel lights for the illumination of road tunnel, underground channel, under the elevated, railway platform.

For fluorescent, metal halide lamps or high pressure sodium for Max.400W E40 lamp holders.

Die cast aluminium body coated with Plating.

Reflector made of highly pure aluminium sheet, polished and anodized.

Please contact our sales office for further details.

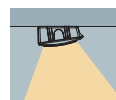


### TL-0621

Lamp: MH/HPS 400W E40

Reflector: Symmetry Width

IP54

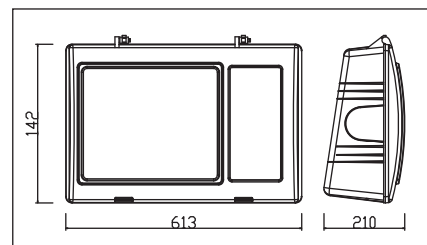


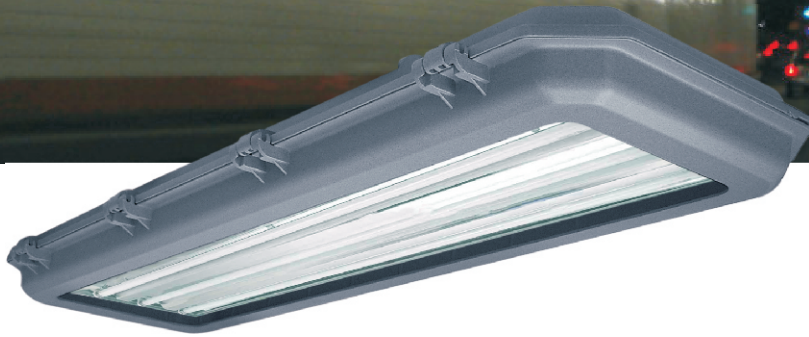
### TL-0622

Lamp: HFED 200W

Reflector: Symmetry Width

IP54





## Foturn

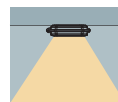
Tunnel lights for the illumination of road tunnel, underground channel, under the elevated, railway platform.

For fluorescent 3x36W G13 lamp holders.

Die cast aluminium body coated with Plating.

Reflector made of highly pure aluminium sheet, polished and anodized.

Please contact our sales office for further details.



### TL-0711

Lamp: FL-T8 3X36W G13

Reflector: Symmetry Width

IP65       

