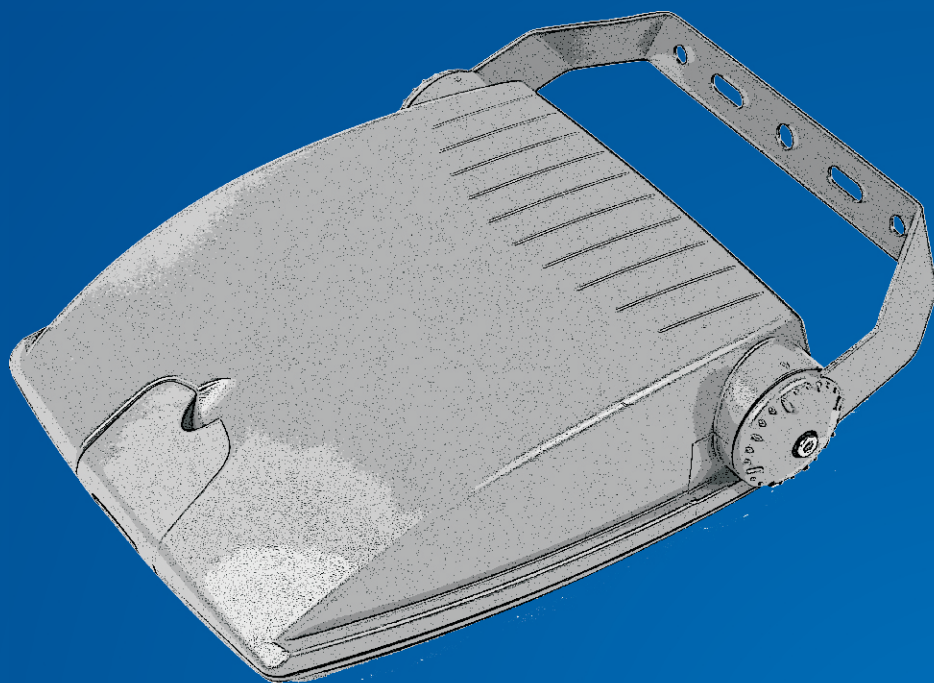




**SD LIGHTING**

Product Catalog-2010





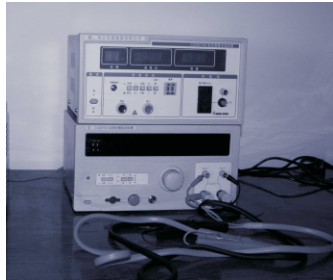
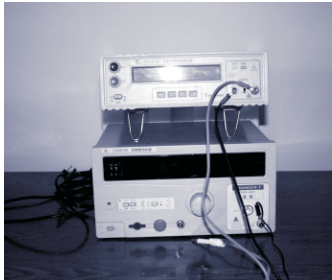
**Sandong Lighting**

# INTRODUCTION

SD lighting manufactures and supplies a wide range of lighting products for lighting commercial, industrial and architectural lighting applications.

NINGBO SANDONG LIGHTING ELECTRIC CO.,LTD., established in 2006, is located Ningbo city, and is responsible for distributing the Sd's products to all over the world. SD product range offers outdoor applications (floodlights, road lights, garden luminaires, bollards, undergrounder lights, wall lights, LED luminaires)

This catalog is designed to help you specify optimum lighting solution for your applications.



# Technical information

## Safety symbols



Luminaires provided with an earth connection. Under fault conditions, the power supply is cut off by an overload device.



Apart from functional insulation, these luminaires have an additional protective insulation. Under fault conditions, no dangerous voltage can reach metal parts which can be touched. Many luminaires are available in Safety class I and also in are available in Safety class II. Please enquire accordingly.



Luminaires operating on safety extra-low voltage. They can only be connected to safety transformers in accordance with EN 60742/VDE 0551 or another power source required by VDE 0100. If an insulation fault occurs, no inadmissibly high touch voltage can develop.



Luminaires with the F-symbol can be fixed to normal flame-inhibiting materials



Indicates that a product can freely circulate within the European Community. It certifies that the product complies with essential safety regulations. All Disano products comply with the EC89/336/EEC "electromagnetic compatibility" and with the EC73/23/EEC "low-voltage" standards. Therefore they comply with EMC regulations (electronic compatibility).

## Foreign body protection-1st digit:

- IP 1X against foreign bodies  $\geq 50\text{mm}$
- IP 2X against foreign bodies  $\geq 12\text{mm}$
- IP 3X against foreign bodies  $\geq 2.5\text{mm}$
- IP 4X against foreign bodies  $\geq 1\text{mm}$
- IP 5X against harmful dust deposits
- IP 6X against dust entry

## Water protection-2nd digit:

- IP X1 against drops of water falling vertically
- IP X2 against foreign bodies from angles up to 15°
- IP X3 against showers up to 60°
- IP X4 against splash water
- IP X5 against water jets
- IP X6 against heavy downpours
- IP X7 against immersion
- IP X8 against submersion

## Applications icon



common areas



Lawn Landscape



Car park  
Parking grounds



Garden



Trees  
Sculpture



Bridge



Building  
Sidewalk



Ring road



Industry  
Construction site



Highway  
main roads



Corridor



Facades



Indoor



Tunnels  
Railway  
Underground and subway

## Beam Distributions



Narrow



Medium



Width



Asymmetry

## Reflector Style



Square Symmetry



Circular



Square Asymmetry



Irregular Asymmetry

## Reflector Surface



HAM



LIN



PLA



SAN



HEX

# CONTENTS

## FLOODLIGHTS

Floodlights with rotationally symmetrical or asymmetrical light distribution for narrow beam light.

Floodlights with flat beam light distribution for area lighting.

Page 7-30



FL-0111 P8



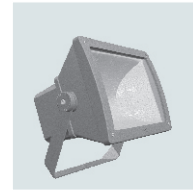
FL-0121 P10



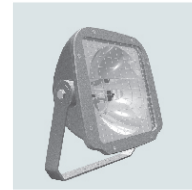
FL-0411 P12



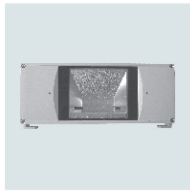
FL-0421 P12



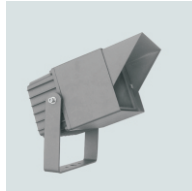
FL-0511 P14



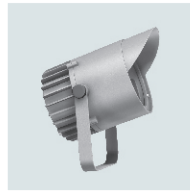
FL-4011 P16



FL-2511 P18



FL-3811 P20



FL-1911 P21



FL-3911 P22



FL-2411 P24



FL-2811 P25



FL-2711 P26



FL-0911 P27



FL-2011 P28



FL-3211 P29

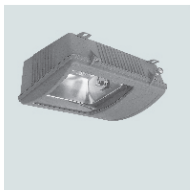


FL-3611 P30

## TUNNEL LIGHTS

Tunnel lights for the illumination of road tunnel, underground channel, under the elevated, railway platform.

Page 31-34



TL-0611 P32



TL-0621 P33



TL-0711 P34

## ROAD LIGHTS

Road luminaires for the illumination of streets and the design of traffic-calmed zones.

Page 35-46



RL-1511 P36



RL-1411 P38



RL-1211 P40



RL-1311 P41



RL-1611 P42



RL-1711 P43



RL-1811 P44



RL-1911 P45



BL-2011 P46

## BOLLARDS

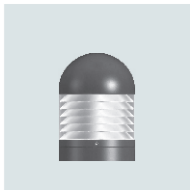
Luminaires for illumination of surfaces from low mounting heights.

Luminaires for many lighting tasks in private and public areas.

Page 47-50



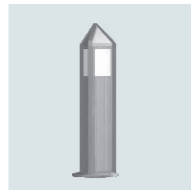
BL-1111 P48



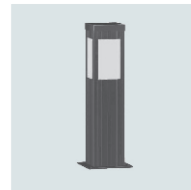
BL-1211 P48



BL-1311 P48



BL-1511 P49



BL-1611 P50

## IN-GROUND LIGHTS

Location luminaires for recessing in the ground.

Lights with symmetrical and asymmetrical light distribution for illumination of trees, poles or facades.

Page 51-56



UL-0111 P52



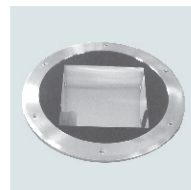
UL-0211 P52



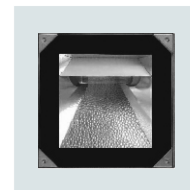
UL-0311 P52



UL-0411 P52



UL-0511 P54



UL-0611 P55

## WATER-PROOF FLUORESCENT

Water-proof : a range of general purpose water and dust resisting fluorescent luminaires.

Ideal for factory, corridor, parking lot and commercial areas.

Page 57-60



WPL-0111 P58



WPL-0121 P58



WPL-0211 P59



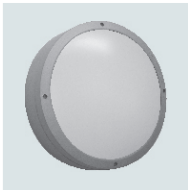
WPL-0221 P59



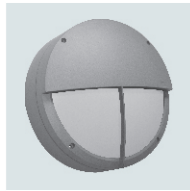
WPL-0311 P60

## WALL LIGHTS

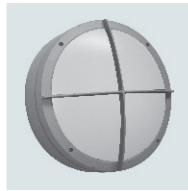
Wall luminaires + ceiling luminaires, High stability and protection class. Luminaires for private and public areas.  
Page 61-68



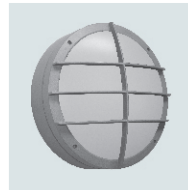
WL-0111 P62



WL-0121 P62



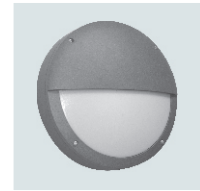
WL-0131 P62



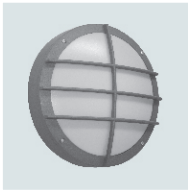
WL-0141 P62



WL-0211 P64



WL-0221 P64



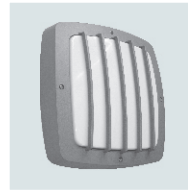
WL-0231 P64



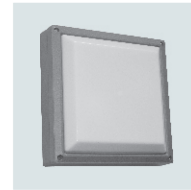
WL-0311 P66



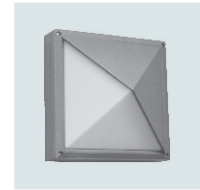
WL-0321 P66



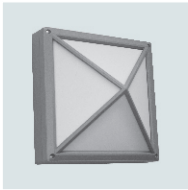
WL-0331 P66



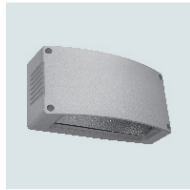
WL-0411 P67



WL-0421 P67



WL-0431 P67



WL-0511 P68

## DOWN LIGHTS

Surface-mounted + recessed ceiling luminaires.  
Waterproof luminaires for private and public areas. Special luminaires for sports grounds and industrial facilities.  
Page 69-76



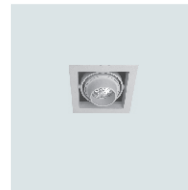
DL-0311 P70



DL-0411 P71



DL-0511 P72



DL-0611 P74



DL-0621 P74



DL-0631 P74



DL-0641 P74



DL-0711 P75



DL-0721 P75



DL-0731 P75



DL-0811 P76



DL-0821 P76



DL-0831 P76



### ■ FLOODLIGHTS

FL-0111 P8  
FL-0121 P10  
FL-0411 P12  
FL-0421 P12  
FL-0511 P14  
FL-4011 P16  
FL-2511 P18  
FL-3811 P20  
FL-1911 P21  
FL-3911 P22  
FL-2411 P24  
FL-2811 P25  
FL-2711 P26  
FL-0911 P27  
FL-2011 P28  
FL-3211 P29  
FL-3611 P30

### ■ BOLLARDS

BL-0111 P48  
BL-0121 P48  
BL-0131 P48  
BL-1511 P49  
BL-1611 P50

### ■ WALL LIGHTS

WL-0111 P62  
WL-0121 P62  
WL-0131 P62  
WL-0141 P62  
WL-0211 P64  
WL-0221 P64  
WL-0231 P64  
WL-0311 P66  
WL-0321 P66  
WL-0331 P66  
WL-0411 P67  
WL-0421 P67  
WL-0431 P67  
WL-0511 P68

### ■ UNDERGROUND LIGHTS

UL-0111 P52  
UL-0211 P52  
UL-0311 P52  
UL-0411 P52  
UL-0511 P54  
UL-0611 P55

### ■ TUNNEL LIGHTS

TL-0611 P32  
TL-0621 P33  
TL-0711 P34

### ■ WATER-PROOF FLUORESCENT

WPL-0111 P58  
WPL-0121 P58  
WPL-0211 P59  
WPL-0221 P59  
WPL-0311 P60

### ■ DOWN LIGHTS

DL-0311 P70  
DL-0411 P71  
DL-0511 P72  
DL-0611 P74  
DL-0711 P75  
DL-0811 P76

### ■ ROAD LIGHTS

RL-1511 P36  
RL-1411 P38  
RL-1211 P40  
RL-1311 P41  
RL-1611 P42  
RL-1711 P43  
RL-1811 P44  
RL-1911 P45  
RL-2011 P46



#### NINGBO SANDONG LIGHTING ELECTRIC CO., LTD

ADD : Houzh ang Village , Hongt ang Town, Jiangbei District, Ningbo, China

Tel : 0574-8307-6515 0574-8307-6516

Fax : 0574-8307-6517

E-mail : [sdzm@sd-lite.com](mailto:sdzm@sd-lite.com) [design@sd-lite.com](mailto:design@sd-lite.com)

Website: [www.sd-lite.com](http://www.sd-lite.com)